

Design: Antje Litzmann, Lanade

***Matariki** is the Maori name of the star cluster also known as ‘Seven Sisters’ or ‘Pleiades’. Its first appearance in New Zealand’s winter sky in late May, early June marks the start of a new phase of life.*

Traditionally Matariki season was the time to plant trees, prepare the land for planting crops and renew associations with whānau and friends. The New Year is a good time to reflect on your place in the world, to reawaken old skills or try out new ones.

—from: *The Maori Language commission*—

The Matariki baby blanket is worked in two sections. First you provisionally cast on your stitches for the central brioche rectangle. The large star in the middle is recommended for blanket sizes above 74 × 74 cm / 29 × 29". Then, stitches from the sides and from the provisional cast on are picked up. The border is worked in rounds with raglan lines, garter stitch and some more sweet little seed stitch stars.

The pattern gives you detailed instructions for two sizes (64 × 54 and 94 × 84 cm / 25 × 21" and 37 × 33") and there is a table at the end that enables you to easily modify the size.



Matariki

- Finished size:** about 64 × 54 cm (**about 25 × 21 "**)
You will find instructions for more sizes in the table at the end of the pattern.
- Materials:** about 449 m / 491 yards (**1026 m / 1122 yards**) of *DROPS Big Merino* or *Malabrigo Rios*
circular needles, size 4.5 mm (US 7) und 5.5 mm (US 9)
I recommend an interchangeable system and cable connectors since cables longer than 150 cm / 60" might be useful (depending on blanket size).
four stitch markers
some waste yarn for casting on
- Gauge:** 16 stitches × 24 rows = 10 × 10 cm / 4 × 4" (on smaller needles, wet blocked)
- Video tutorials:** knitting brioche: <http://vimeo.com/6255267>
provisional cast on: <http://vimeo.com/6709745>

Abbreviations:

WS	wrong side
RS	right side
ES	edge stich
RL	raglan line
PM	place marker
SM	slip marker
sts	stitches
yo	yarn over
M1l	make one left
M1r	make one right
BOR	beginning of round

Directions:

Cast on: (see tutorial)

Using waste yarn and smaller needles, provisionally cast on 51 (**99**) stitches.
Change to working yarn.

Brioche rows: (see tutorial)

Set up row 1 (RS): k one row.

Set up row 2 (WS): k1 (ES), *slip1 purlwise with yarn over, k1*, repeat from * to * until 2 stitches are left, slip1 purlwise with yarn over, k1 (ES).

Brioche row 1 (RS): k1 (ES), *knit double stitch as if it were a single stitch, slip1 purlwise with yo*, repeat from * to * until 2 stitches remain, knit double stitch, k1 (ES).

Brioche row 2 (WS): k1 (ES), *slip1 purlwise with yo, knit double stitch*, repeat from * to * until 2 stitches remain, slip1 purlwise with yo, k1 (ES).

Size 64 × 54 cm / 25 × 21 ": Repeat brioche row one and two 63 more times for a total of 130 brioche rows (including set up rows).

Size 94 × 84 cm / 37 × 33 ": Repeat brioche row one and two 37 more times (78 brioche rows including set up rows).

Next row (RS): k1 (ES), work 25 sts brioche, PM, work line 1 of 'Large star' chart, PM, work 25 sts brioche, k1 (ES).

Continue working brioche and 'Large star' chart between markers.

Remove markers when you work line 70 (WS) of 'Large star' chart.

Repeat brioche row one and two 39 more times (78 brioche rows).

226 rows brioche total.

Pick up stitches and join for the round:

Place all sts from provisional cast on on a second needle and return to other side of your work.

Next row (RS): k1 (former edge stitch ES, now raglan line RL), knit until 1 st remains (treat double stitches as if they were single stitches, PM, k1 (RL), pick up and knit one stitch for every 2 rows along the left hand side of the rectangle (65 (113) sts total), PM, now work sts from the second needle: k1 (RL), k until 1 st remains, PM, k1 (RL), pick up and knit one stitch for every 2 rows along the right hand side of the rectangle (65 (113) sts total), place BOR marker and join for the round.

232 (~~424~~) sts

(or twice the number of cast on sts plus number of brioche rows)

Garter rounds:

Garter round 1: Purl.

Garter round 2: *k1 (RL), m1l, k to next marker, m1r, SM*, repeat from * 3 more times.

Repeat garter round one and two 3 more times for a total of 8 rounds.

Next round: knit without increases.

+ 32 sts

Star rounds:

Star round 1:

k1 (RL), m1l, work first/next line of 'Little stars' chart (A, 2 × B, C (A, 5 × B, C)), m1r, SM,
 k1 (RL), m1l, work current line of 'Little stars' chart (A, 3 × B, C (A, 6 × B, C)), m1r, SM,
 k1 (RL), m1l, work current line of 'Little stars' chart (A, 2 × B, C (A, 5 × B, C)), m1r, SM,
 k1 (RL), m1l, work current line of 'Little stars' chart (A, 3 × B, C (A, 6 × B, C)), m1r.

Star round 2:

k1 (RL), work next line of 'Little stars' chart (A, 2 × B, C (A, 5 × B, C)), SM,
 k1 (RL), work current line of 'Little stars' chart (A, 3 × B, C (A, 6 × B, C)), SM,
 k1 (RL), work current line of 'Little stars' chart (A, 2 × B, C (A, 5 × B, C)), SM,
 k1 (RL), work current line of 'Little stars' chart (A, 3 × B, C (A, 6 × B, C)).

Work star rounds 1 and 2 until line 21 of 'Little stars' chart is done (last round is a star round 1).

+ 88 sts

Garner rounds:

Work garner rounds 1 and 2 (see above) 3 times, then work one more garner round one, 7 rows total.

+ 24 sts

Bind off:

Change to larger needle.

Remove BOR marker, cast on two stitches on the left hand needle.

*k1, k2 together through the back loop, slip both new stitches from right hand needle back to left hand needle, repeat from * until 2 sts remain, removing all markers when you reach them.

k2 together through the back loop, make a knot, and cut yarn.

Weave in loose ends and wet block to measurements. Enjoy :)

Other sizes:

To modify the size of the blanket you need to work more or less repeats of the ‘Little stars’ chart in the border. The table gives you the number of stitches you need to cast on and the number of brioche rows you need to work so you will have the right number of stitches on your needle when you reach the garter/star rounds. The approximate meterage / yardage is also given in the table.

Apart from that you can follow the general instructions. You may choose to knit the large star in the middle for all sizes above 74 × 74 cm / 29 × 29" or 6 × 6 little stars.

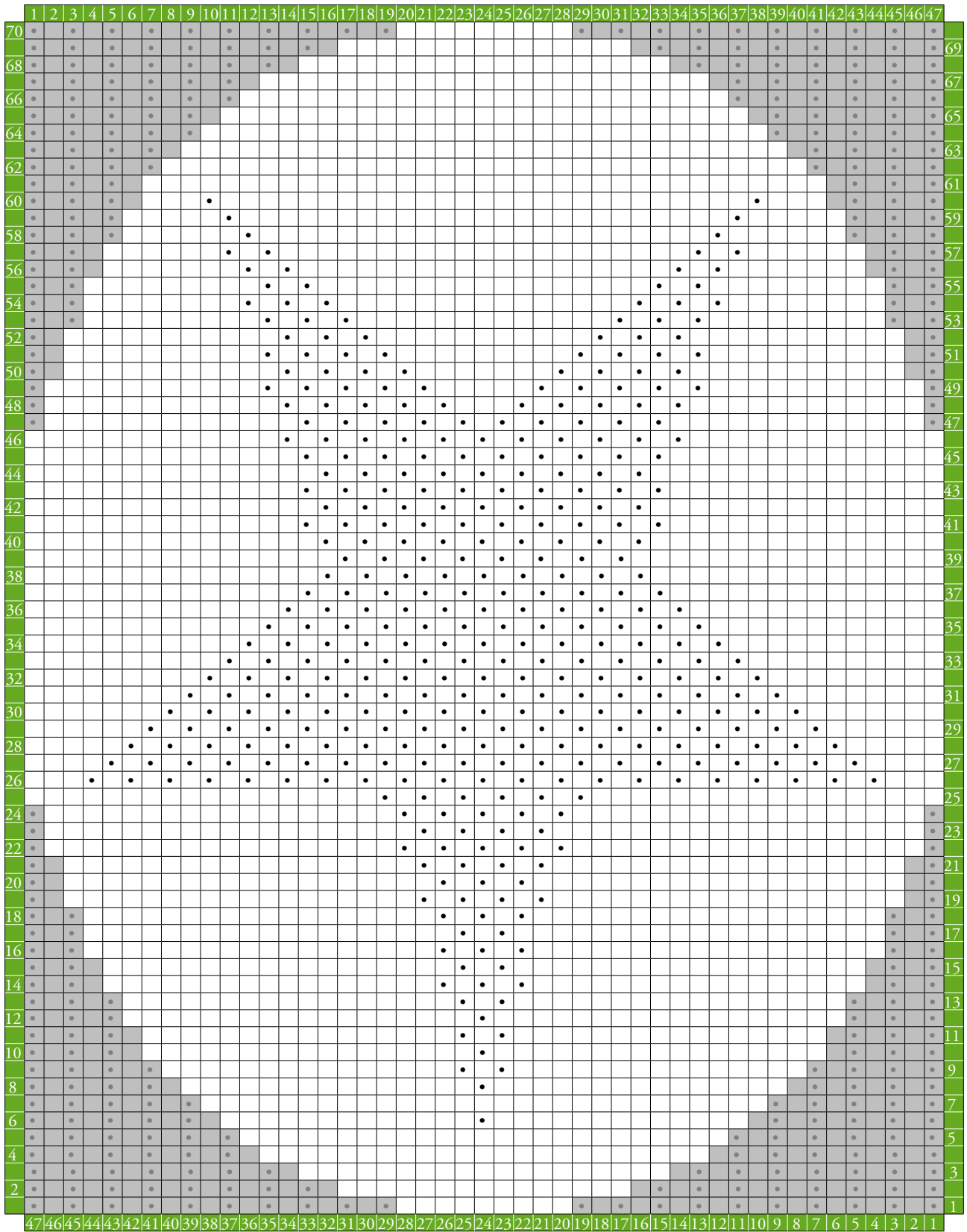
To place the large star exactly in the center of your blanket, take your number of rows from the table, subtract 70 rows and divide the result by 2. That is the number of rows you need to knit brioche before starting with the chart. Then you place 2 markers to indicate the first and last of the charted stitches within your rows. Take your number of stitches from the table, subtract 47 sts and divide the result by 2. That is the number of sts you need to knit brioche in front and behind the charted sts (set markers). Once you finish line 70 of the ‘Large star’ chart, you can remove your markers and continue to knit as many rows brioche as you calculated in the beginning.

		Width							
		about 44 cm	about 54 cm	about 64 cm	about 74 cm	about 84 cm	about 94 cm	about 104 cm	
		3 little stars	4 little stars	5 little stars	6 little stars	7 little stars	8 little stars	9 little stars	
Length	about 44 cm	35 sts × 66 rows brioche	51 sts × 66 rows brioche	67 sts × 66 rows brioche	83 sts × 66 rows brioche	99 sts × 66 rows brioche	115 sts × 66 rows brioche	131 sts × 66 rows brioche	
	3 little stars	about 248 m / 271 yards	about 305 m / 334 yards	about 363 m / 397 yards	about 421 m / 460 yards	about 478 m / 523 yards	about 536 m / 586 yards	about 594 m / 650 yards	
	about 54 cm	35 sts × 98 rows brioche	51 sts × 98 rows brioche	67 sts × 98 rows brioche	83 sts × 98 rows brioche	99 sts × 98 rows brioche	115 sts × 98 rows brioche	131 sts × 98 rows brioche	
	4 little stars	about 307 m / 336 yards	about 377 m / 412 yards	about 447 m / 489 yards	about 518 m / 566 yards	about 588 m / 643 yards	about 658 m / 720 yards	about 728 m / 797 yards	
	about 64 cm	35 sts × 130 rows brioche	51 sts × 130 rows brioche	67 sts × 130 rows brioche	83 sts × 130 rows brioche	99 sts × 130 rows brioche	115 sts × 130 rows brioche	131 sts × 130 rows brioche	
	5 little stars	about 366 m / 400 yards	about 449 m / 491 yards	about 532 m / 582 yards	about 615 m / 672 yards	about 697 m / 763 yards	about 780 m / 853 yards	about 863 m / 944 yards	
	about 74 cm	35 sts × 162 rows brioche	51 sts × 162 rows brioche	67 sts × 162 rows brioche	83 sts × 162 rows brioche	99 sts × 162 rows brioche	115 sts × 162 rows brioche	131 sts × 162 rows brioche	
	6 little stars	about 425 m / 465 yards	about 521 m / 570 yards	about 616 m / 674 yards	about 712 m / 778 yards	about 807 m / 882 yards	about 902 m / 987 yards	about 998 m / 1091 yards	
	about 84 cm	35 sts × 194 rows brioche	51 sts × 194 rows brioche	67 sts × 194 rows brioche	83 sts × 194 rows brioche	99 sts × 194 rows brioche	115 sts × 194 rows brioche	131 sts × 194 rows brioche	
7 little stars	about 485 m / 530 yards	about 593 m / 648 yards	about 701 m / 766 yards	about 808 m / 884 yards	about 916 m / 1002 yards	about 1024 m / 1120 yards	about 1132 m / 1238 yards		
about 94 cm	35 sts × 226 rows brioche	51 sts × 226 rows brioche	67 sts × 226 rows brioche	83 sts × 226 rows brioche	99 sts × 226 rows brioche	115 sts × 226 rows brioche	131 sts × 226 rows brioche		
8 little stars	about 544 m / 595 yards	about 665 m / 727 yards	about 785 m / 858 yards	about 905 m / 990 yards	about 1026 m / 1122 yards	about 1146 m / 1254 yards	about 1267 m / 1385 yards		
about 104 cm	35 sts × 258 rows brioche	51 sts × 258 rows brioche	67 sts × 258 rows brioche	83 sts × 258 rows brioche	99 sts × 258 rows brioche	115 sts × 258 rows brioche	131 sts × 258 rows brioche		
9 little stars	about 603 m / 660 yards	about 736 m / 805 yards	about 869 m / 951 yards	about 1002 m / 1096 yards	about 1135 m / 1242 yards	about 1268 m / 1387 yards	about 1401 m / 1533 yards		



Chart 'Large star'

47 sts x 70 rows. Work from the bottom up: right to left in right side rows and left to right in wrong side rows.



- RS: purl; WS: knit
- RS: knit; WS: purl
- RS: slip1 purlwise with yarn over, WS: knit double stitch as if it were a single stitch (brioche)
- RS: knit double stitch as if it were a single stitch, WS: slip1 purlwise with yarn over (brioche)